



Università degli Studi di Torino

Questionario sulla valutazione della didattica

Anno accademico: 2016/2017

SCIENZE MEDICHE

Rapporto statistico relativo al Corso di Studi

LAUREA I[^] LIV, IN

DIETISTICA (ABILITANTE ALLA PROFESSIONE SANITARIA DI DIETISTA)

Valutazione relativa al V Periodo

RAPPRESENTAZIONE GRAFICA DELLE STATISTICHE

In Edumeter le domande proposte nei questionari possono avere quattro risposte: 2 con valore negativo e 2 con valore positivo. Le risposte negative vengono memorizzate con i valori 1 e 2. Le risposte positive invece con i valori 3 e 4. Tutte le altre risposte sono "neutre" al fine del calcolo della media. Nel calcolo della media delle risposte di una domanda si tiene conto del numero totale di risposte e del numero relativo di ogni risposta. Dato il valore assegnato alle singole risposte, la media ponderata assumerà un valore compreso tra 1 e 4. Per avere una maggiore percezione dell'andamento della media delle risposte, la media ponderata originale viene normalizzata ai valori -1 e 1.

Somma giudizi: Somma dei giudizi raccolti (da 1 a 4).

Valore medio (*): Valore medio sui 4 giudizi (valore tra 1 a 4).

Valore medio ():** Valore medio sui 4 giudizi (valore tra -1 a 1).

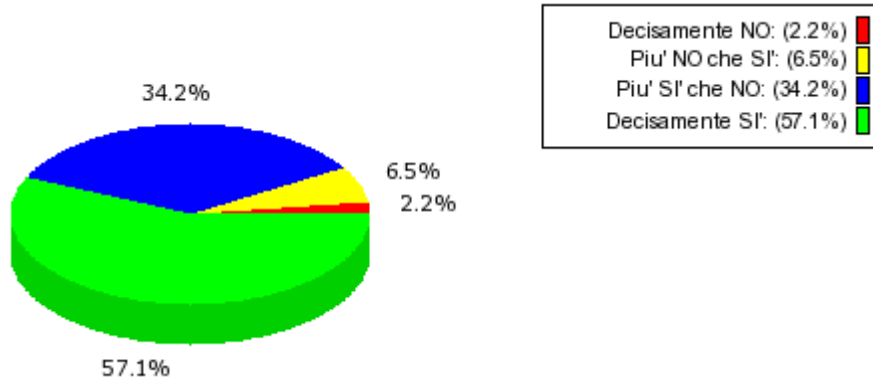
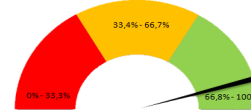
Dev. standard: Deviazione standard.

Soddisfazione: Indice di soddisfazione, in percentuale, ottenuto come rapporto tra la somma delle risposte positive (PIU' SI' CHE NO e DECISAMENTE SI) e il totale dei primi quattro giudizi.

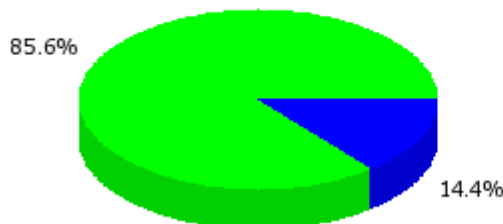
Su questo corso di studi si sono espressi 50 studenti

Valore medio (*): 3.46
Valore medio (): 0.64**
Dev. Standard: 0.72

Soddisfazione: 91.24%



Valutazioni espresse:	(85.6%)
Valutazioni non espresse:	(14.4%)

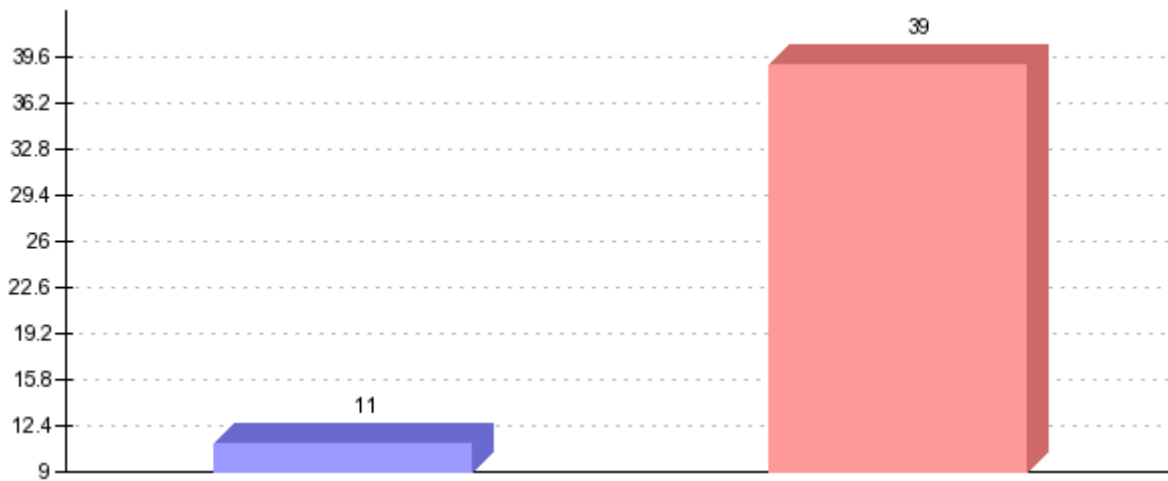
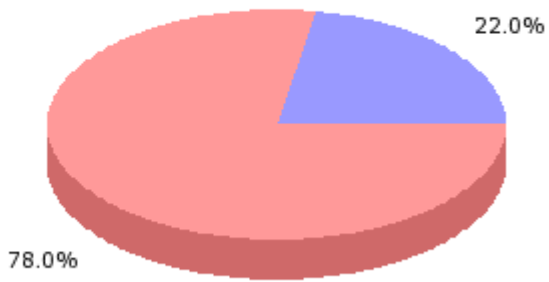
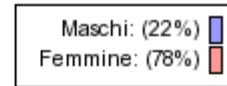


PROFILO PERSONALE - SESSO

M: 11

F: 39

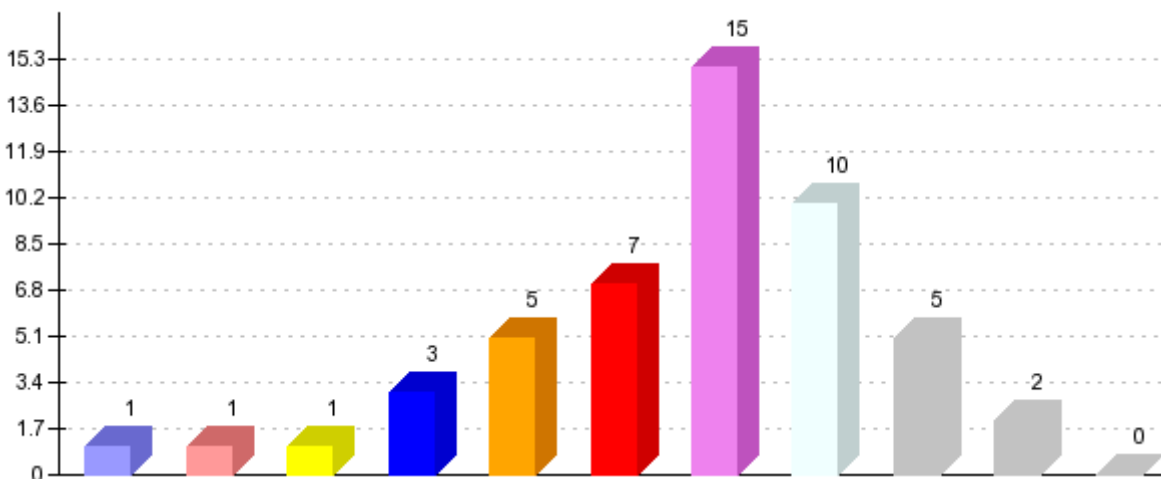
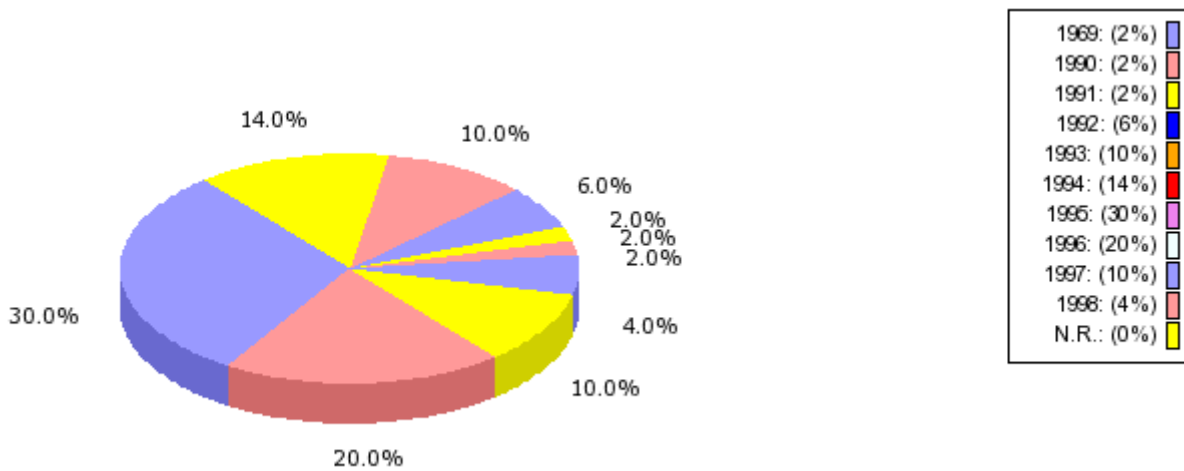
Totale valutazioni: 50



PROFILO PERSONALE - ANNO DI NASCITA

1969:	1
1990:	1
1991:	1
1992:	3
1993:	5
1994:	7
1995:	15
1996:	10
1997:	5
1998:	2
N.R.:	0

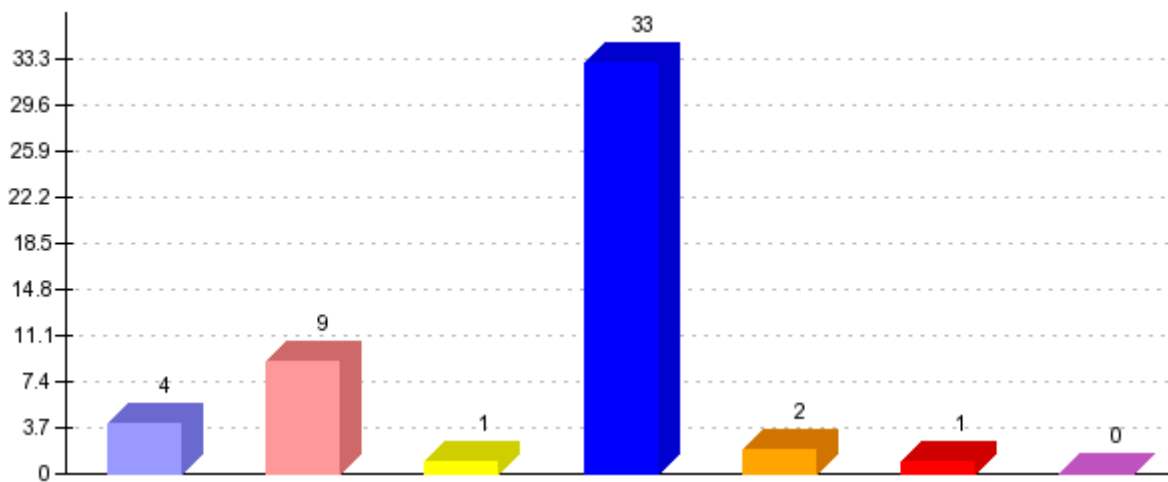
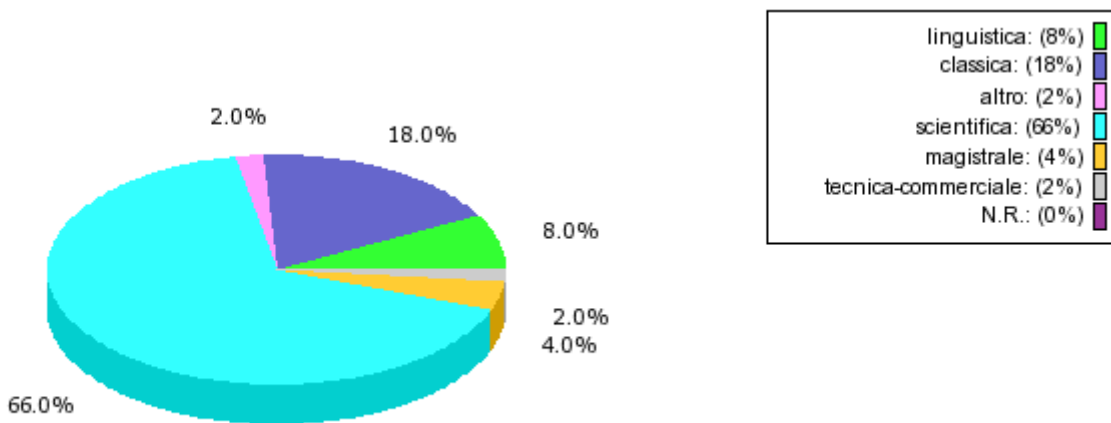
Totale valutazioni: 50



PROFILO PERSONALE - TIPO DI MATURITA'

linguistica:	4
classica:	9
altro:	1
scientifica:	33
magistrale:	2
tecnica-commerciale:	1
N.R.:	0

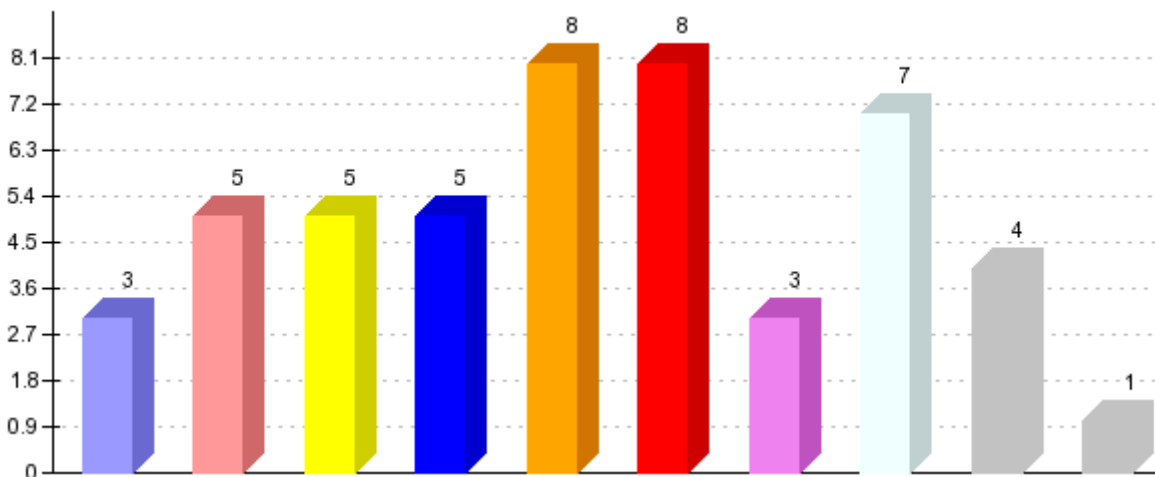
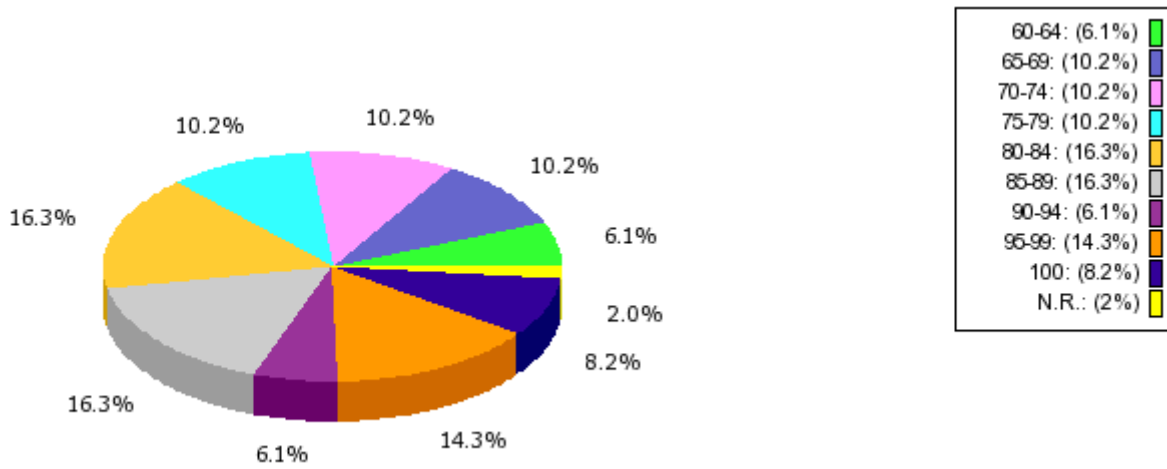
Totale valutazioni: 50



PROFILO PERSONALE - VOTO DI MATURITA'

60-64:	3
65-69:	5
70-74:	5
75-79:	5
80-84:	8
85-89:	8
90-94:	3
95-99:	7
100:	4
N.R.:	1

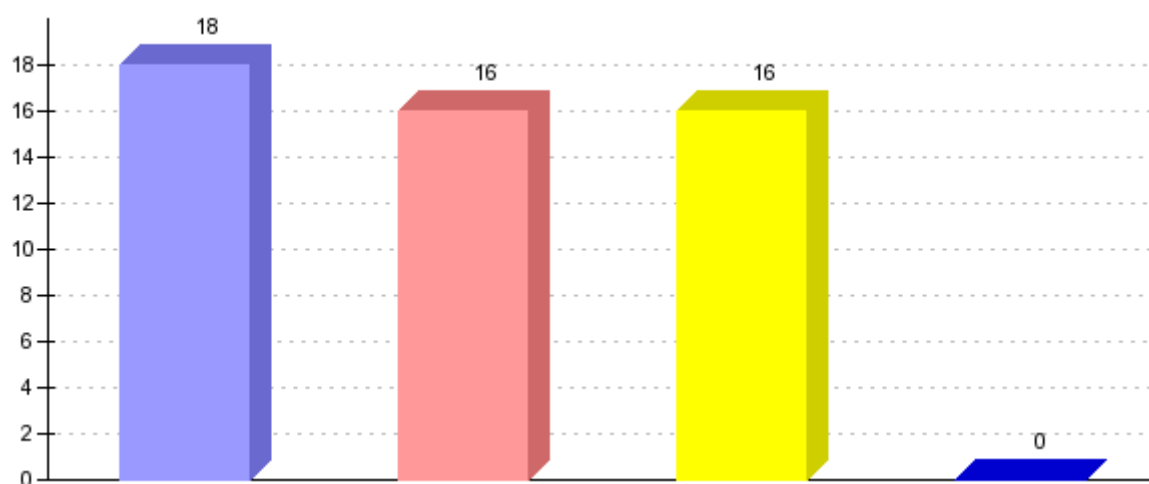
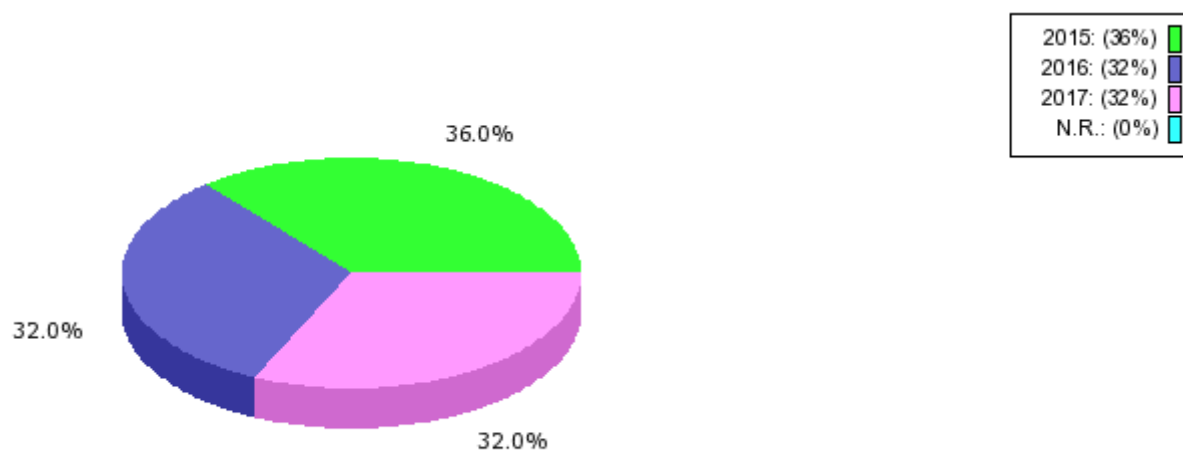
Totale valutazioni: 50



PROFILO PERSONALE - ANNO DI IMMATRICOLAZIONE

2015:	18
2016:	16
2017:	16
N.R.:	0

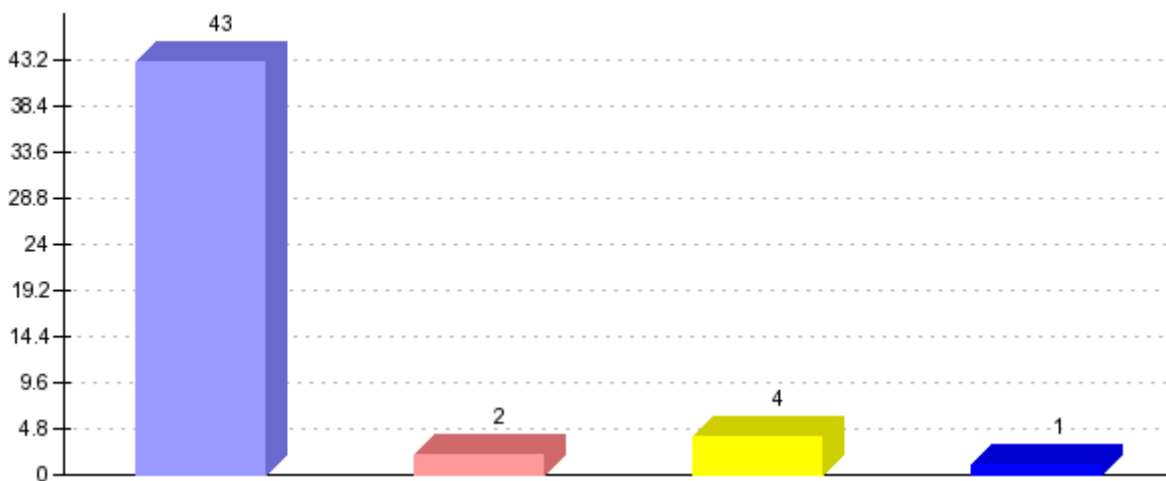
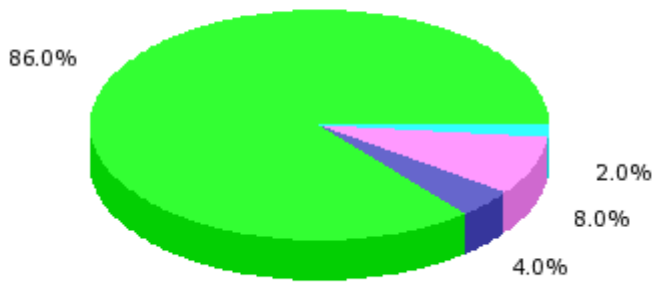
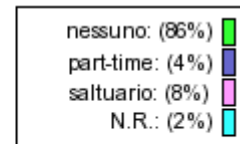
Totale valutazioni: 50



PROFILO PERSONALE - CONDIZIONE LAVORATIVA

nessuno: 43
part-time: 2
saltuario: 4
N.R.: 1

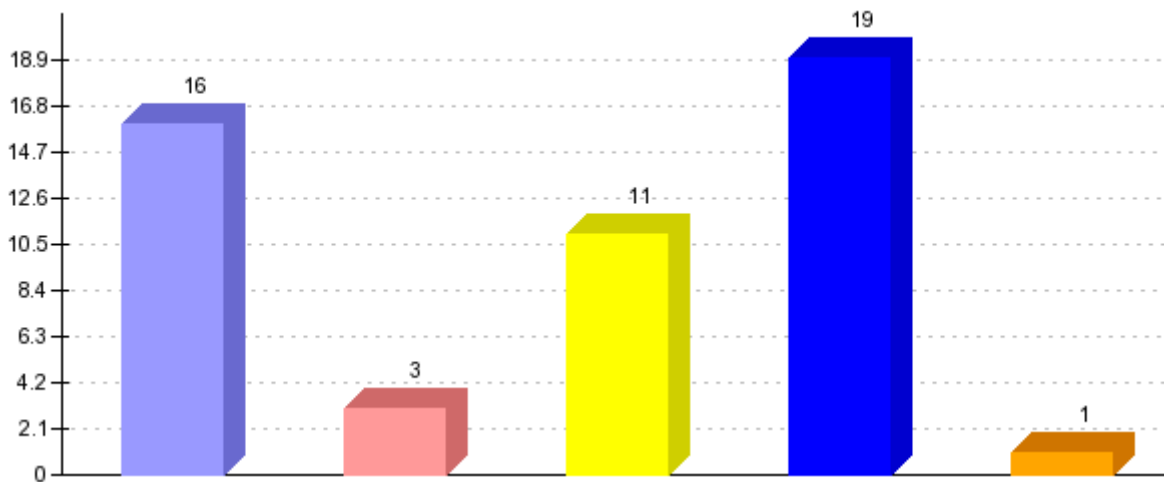
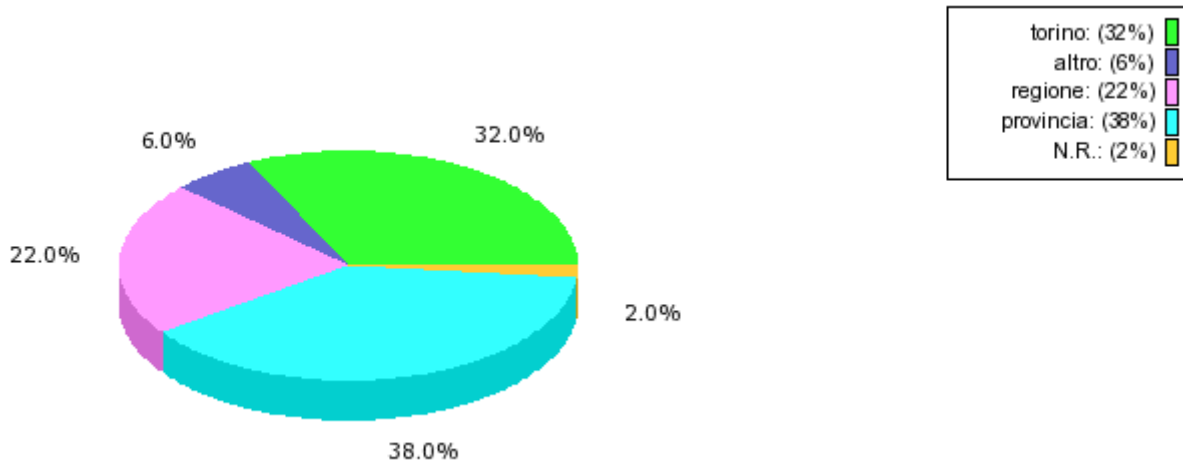
Totale valutazioni: 50



PROFILO PERSONALE - DOMICILIO

torino: 16
altro: 3
regione: 11
provincia: 19
N.R.: 1

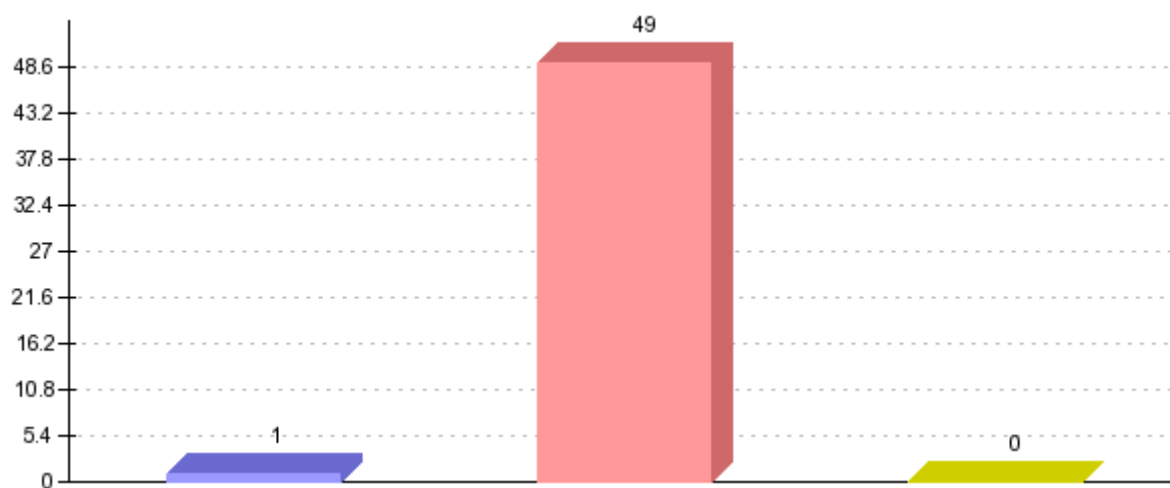
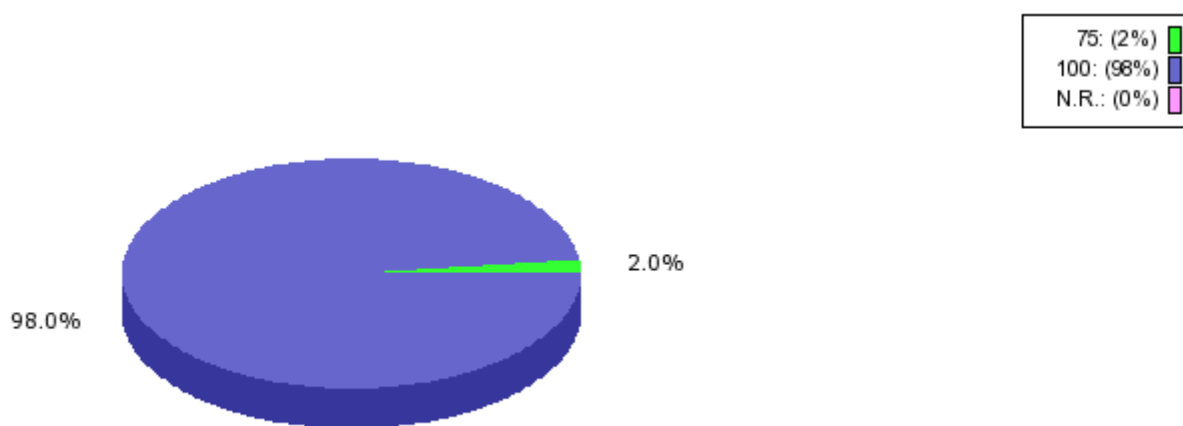
Totale valutazioni: 50



VITA UNIVERSITARIA - PERCENTUALE DI LEZIONI FREQUENTATE

75: 1
100: 49
N.R.: 0

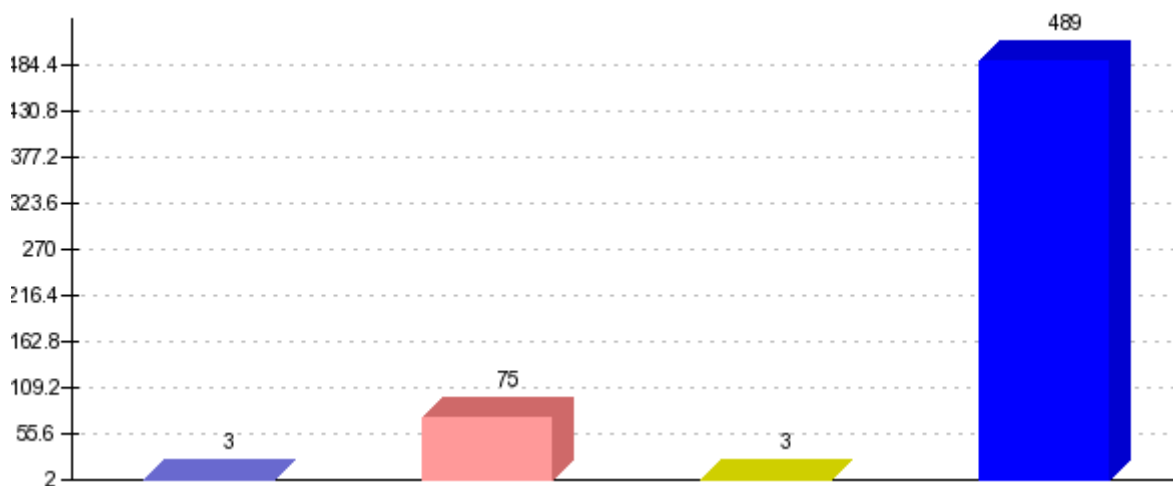
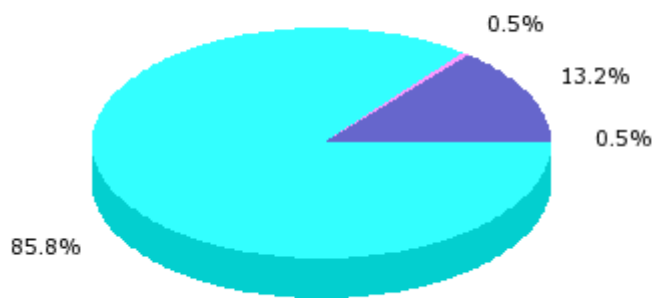
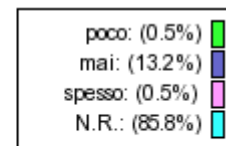
Totale valutazioni: 50



VITA UNIVERSITARIA - UTILIZZO DEL RICEVIMENTO STUDENTI

poco: 3
mai: 75
spesso: 3
N.R.: 489

Totale valutazioni: 50



Domande questionario valutazione

Le aule in cui si svolgono le lezioni sono adeguate? (Si vede, si sente, si trova posto)

[Are the classroom facilities adequate? (visibility, acoustic, availability of seats)]

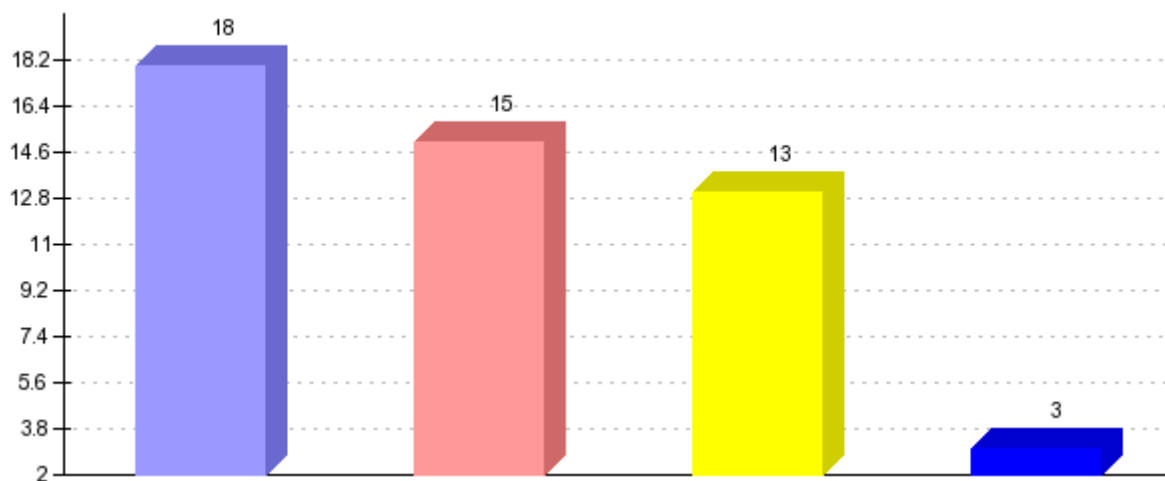
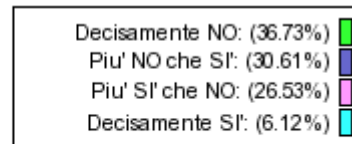
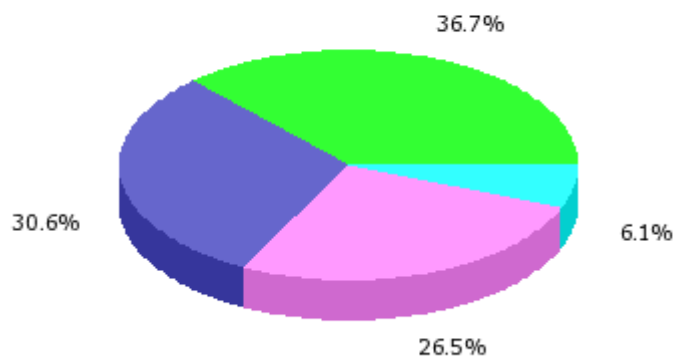
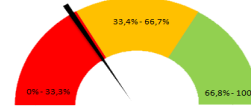
Somma giudizi: 49

Valore medio (*): 2.02

Valore medio (**): -0.32

Dev. Standard: 0.94

Soddisfazione: 32.65%

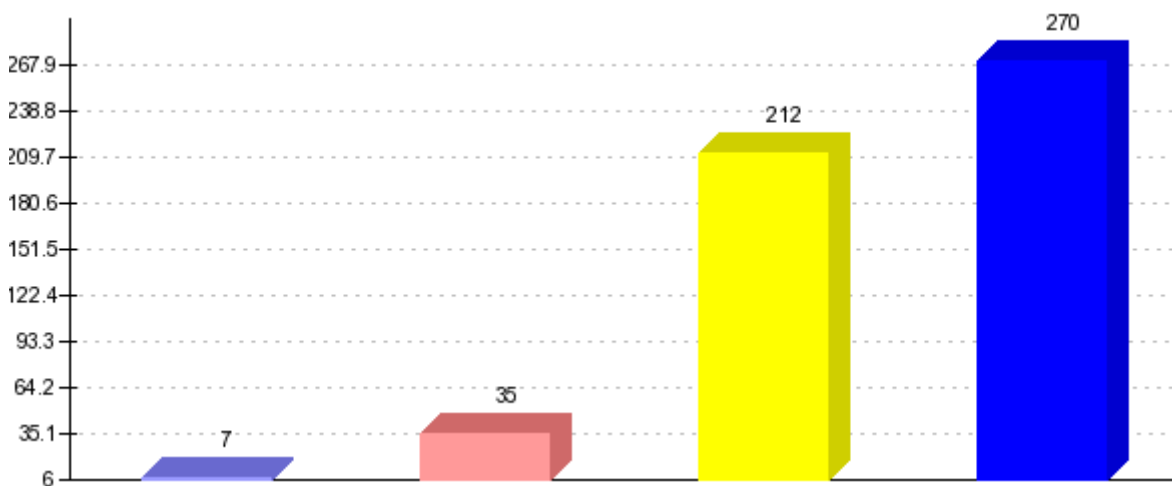
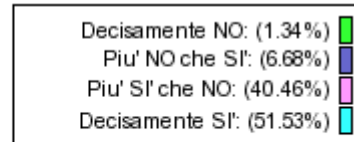
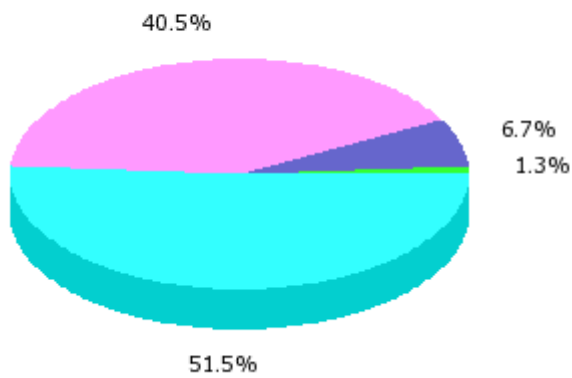
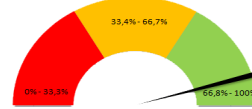


Domande questionario valutazione

Le conoscenze preliminari possedute sono risultate sufficienti per la comprensione degli argomenti previsti nel programma d'esame? [Was your basic knowledge sufficient to understand the contents of this course?]

Somma giudizi: 524
Valore medio (*): 3.42
Valore medio (**): 0.61
Dev. Standard: 0.68

Soddisfazione: 91.98%

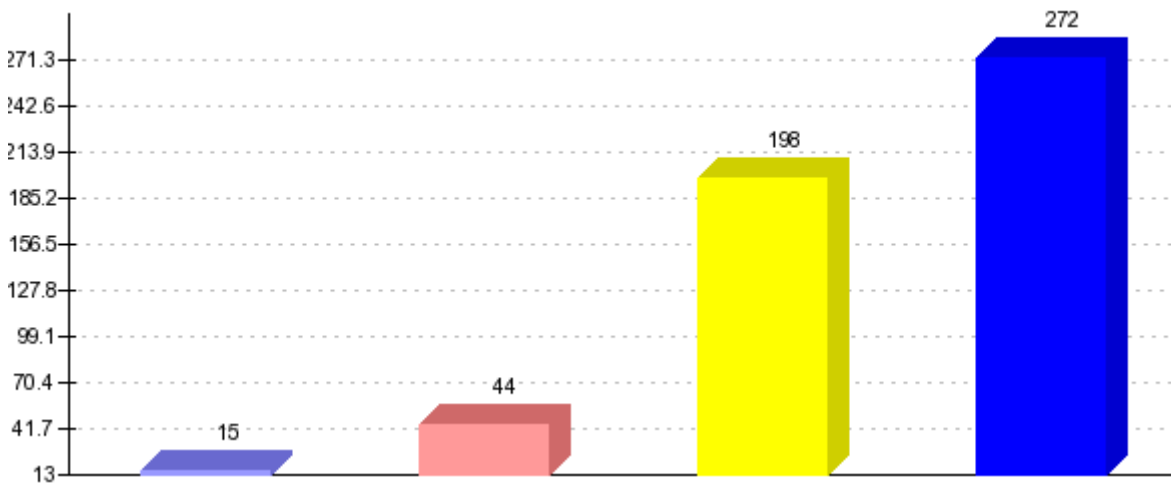
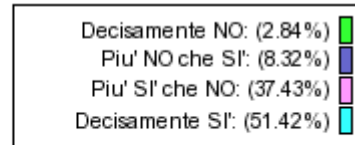
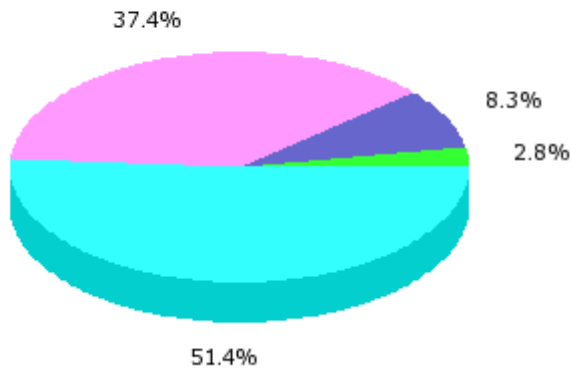
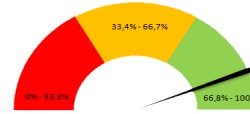


Domande questionario valutazione

Il carico di studio dell'insegnamento è proporzionato ai crediti assegnati? [Is the study workload proportionate to the credits earned?]

Somma giudizi: 529
Valore medio (*): 3.37
Valore medio (**): 0.58
Dev. Standard: 0.76

Soddisfazione: 88.85%

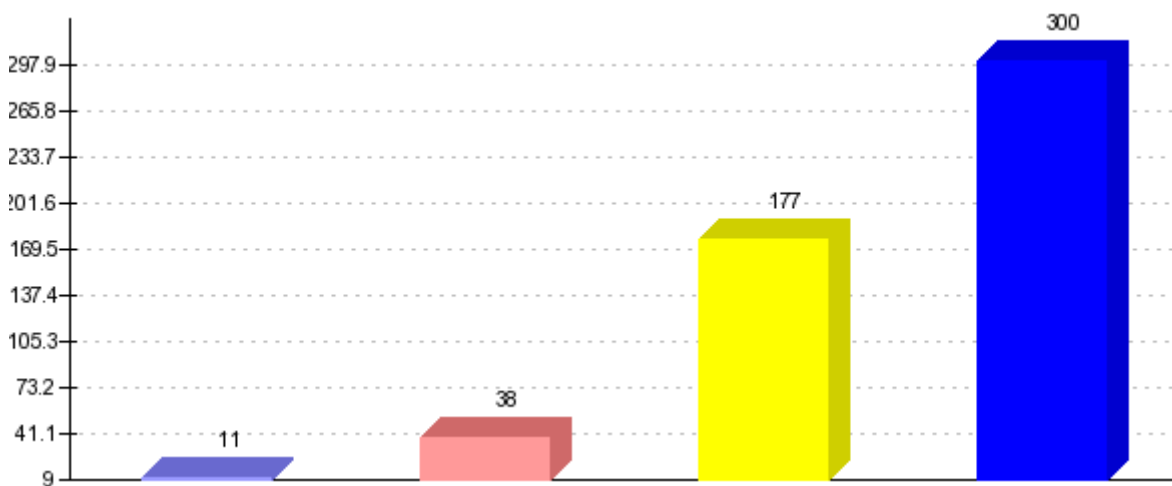
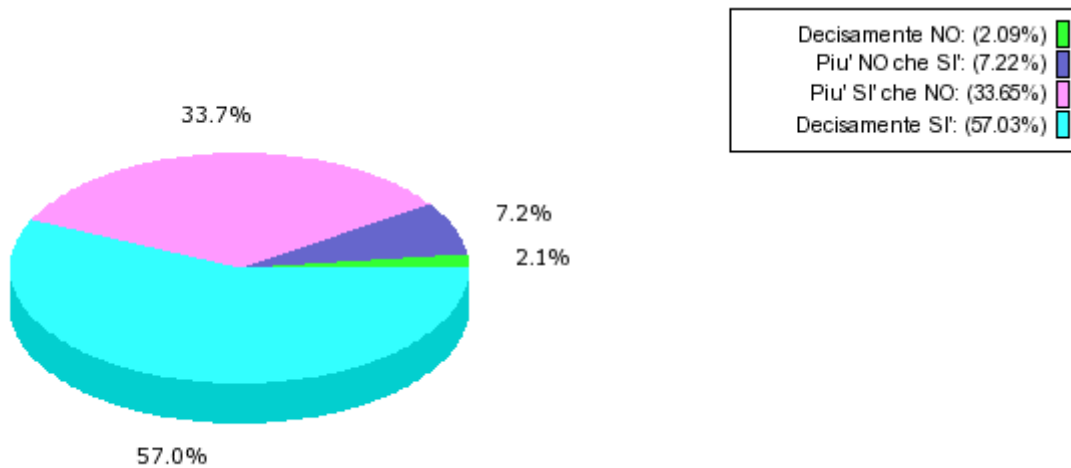
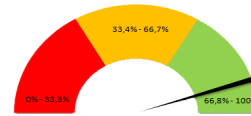


Domande questionario valutazione

Il materiale didattico (indicato e disponibile) è adeguato per lo studio della materia? [Is the learning material (suggested and available) suitable for studying for the exam?]

Somma giudizi: 526
 Valore medio (*): 3.46
 Valore medio (**): 0.64
 Dev. Standard: 0.72

Soddisfazione: 90.68%

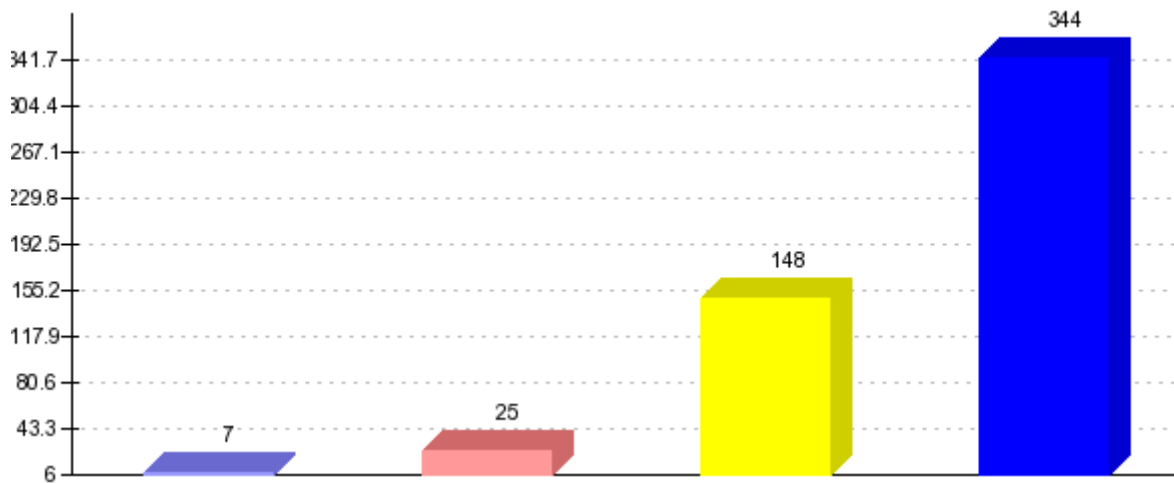
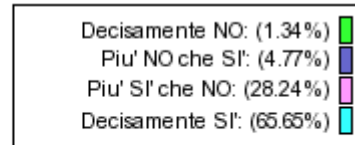
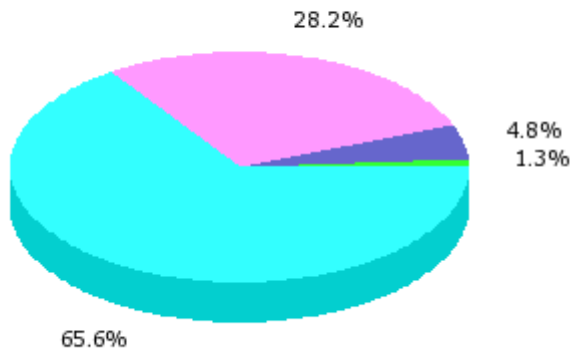
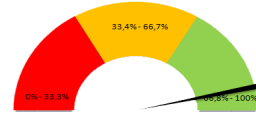


Domande questionario valutazione

Le modalità d'esame sono state definite in modo chiaro? [Were the exam evaluation procedures clearly defined?]

Somma giudizi: 524
Valore medio (*): 3.58
Valore medio (**): 0.72
Dev. Standard: 0.65

Soddisfazione: 93.89%

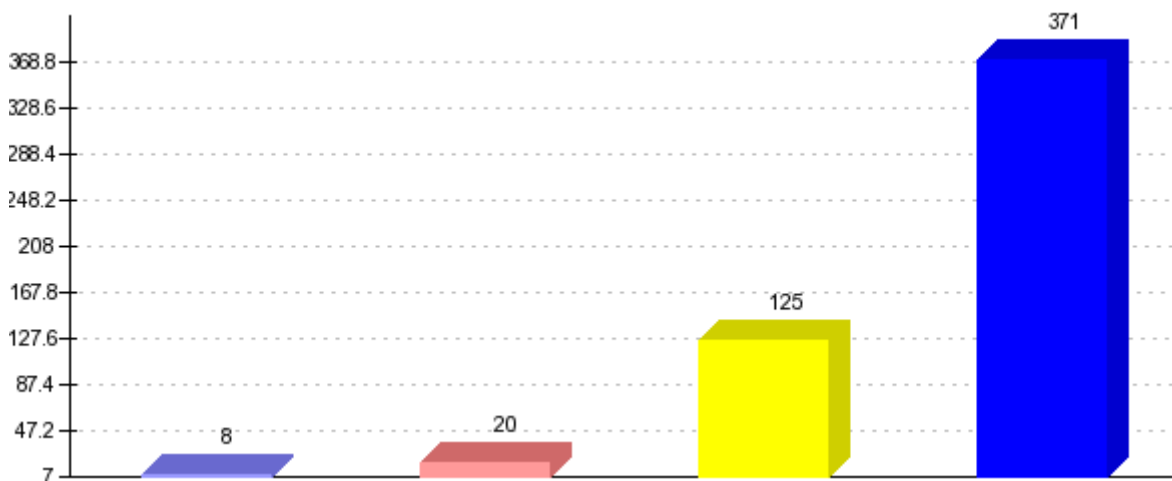
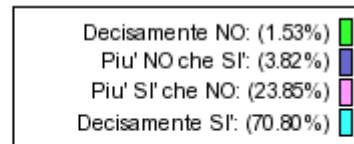
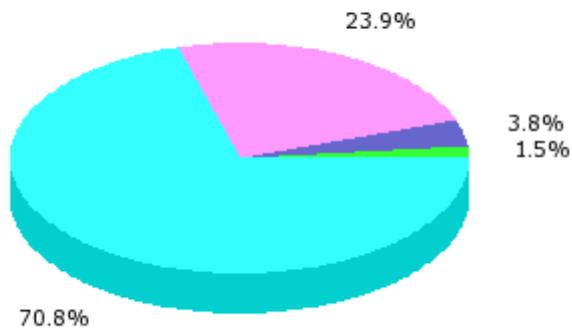
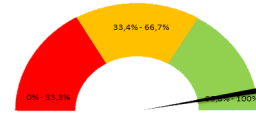


Domande questionario valutazione

Gli orari di svolgimento di lezioni, esercitazioni e altre eventuali attività didattiche sono rispettati? [Are lectures, exercises and other activities in line with pre-set schedules/timetables?]

Somma giudizi: 524
 Valore medio (*): 3.64
 Valore medio (**): 0.76
 Dev. Standard: 0.63

Soddisfazione: 94.66%

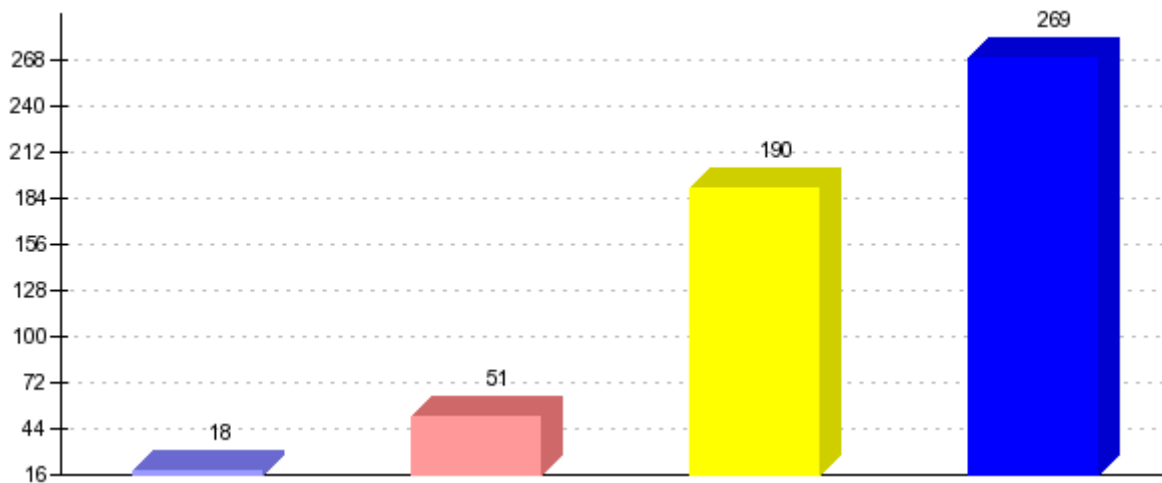
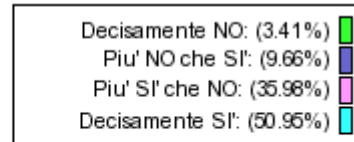
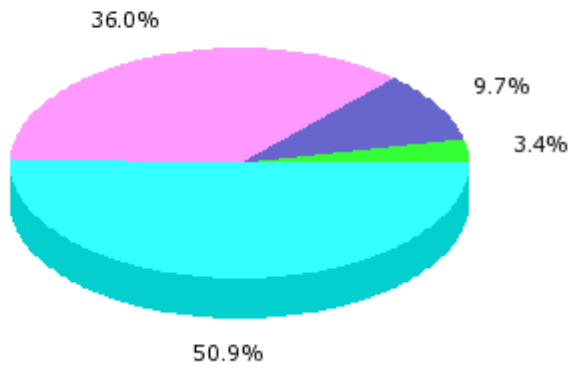
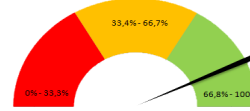


Domande questionario valutazione

Il docente stimola / motiva l'interesse verso la disciplina? [Does the professor stimulate your interest for this subject?]

Somma giudizi: 528
 Valore medio (*): 3.34
 Valore medio (**): 0.56
 Dev. Standard: 0.79

Soddisfazione: 86.93%

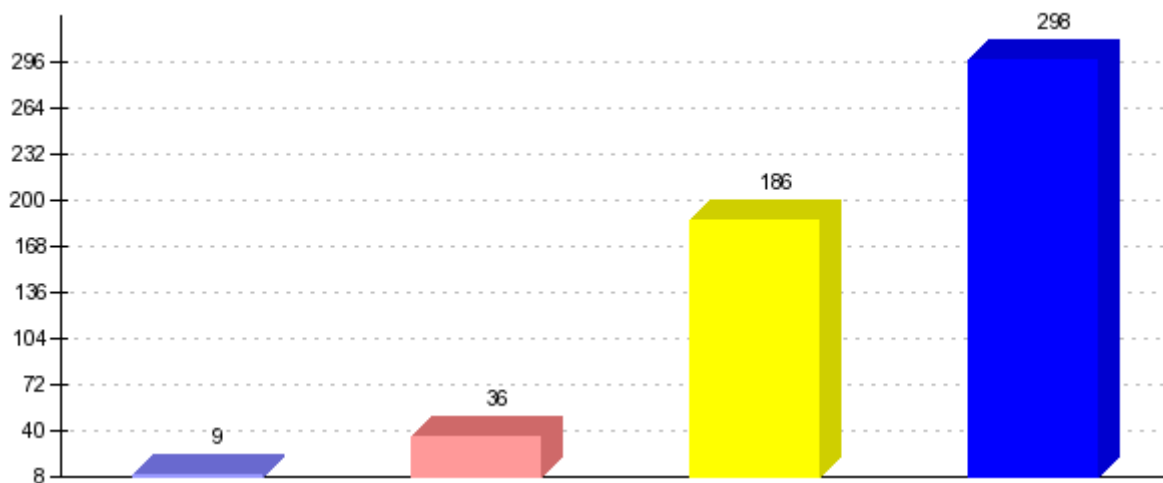
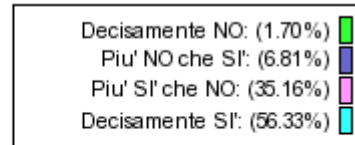
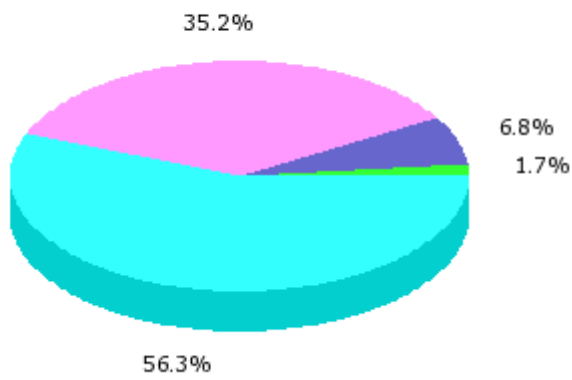
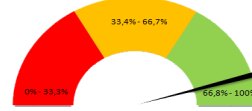


Domande questionario valutazione

Il docente espone gli argomenti in modo chiaro? [Does the professor clearly teach the contents of the course?]

Somma giudizi: 529
Valore medio (*): 3.46
Valore medio (**): 0.64
Dev. Standard: 0.70

Soddisfazione: 91.49%

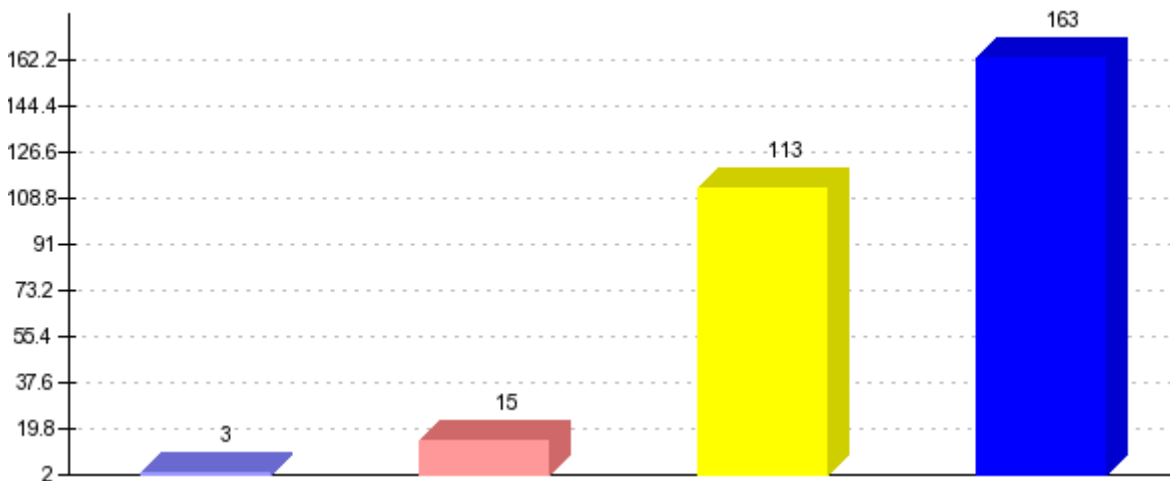
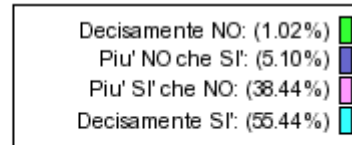
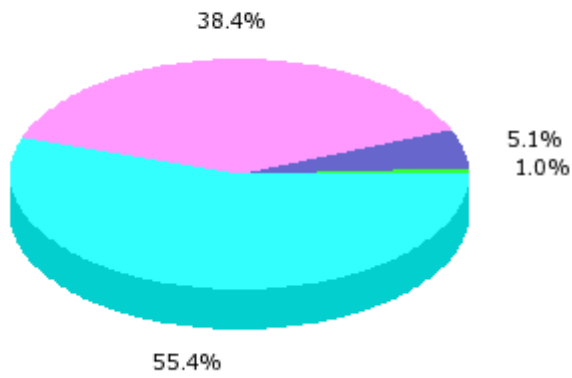
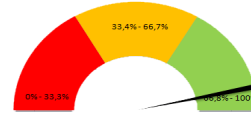


Domande questionario valutazione

Le attività didattiche integrative (esercitazioni, tutorati, laboratori, etc...), ove esistenti, sono utili all'apprendimento della materia? (non compilare se non pertinente) [Are the supplementary didactic activities (such as tutorials, labs, and workshops), if any, useful to learn the content of the course]

Somma giudizi: 294
Valore medio (*): 3.48
Valore medio (**): 0.66
Dev. Standard: 0.64

Soddisfazione: 93.88%



Domande questionario valutazione

L'insegnamento è stato svolto in maniera coerente con quanto dichiarato sul sito Web del corso di studio?

[Was the course carried out in a manner consistent with what was stated on the course syllabus published on the website?]

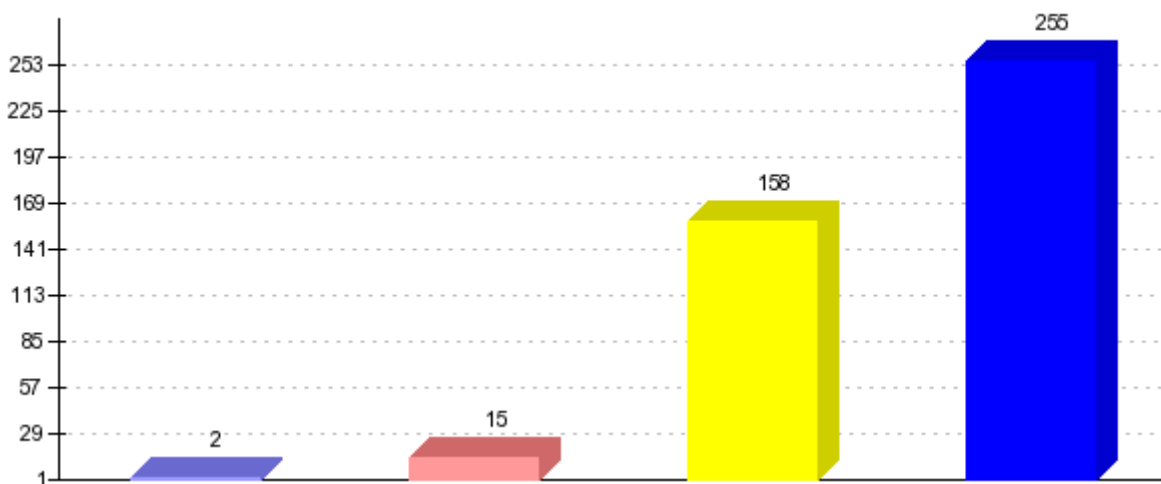
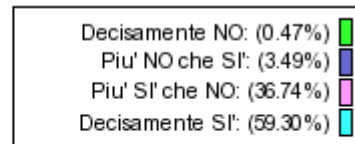
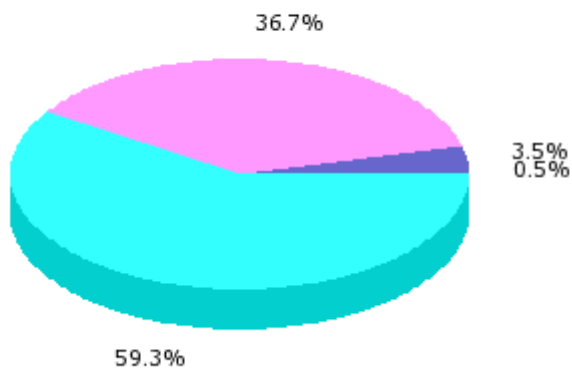
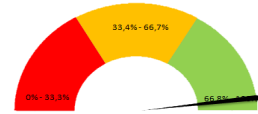
Somma giudizi: 430

Valore medio (*): 3.55

Valore medio (**): 0.70

Dev. Standard: 0.59

Soddisfazione: 96.05%

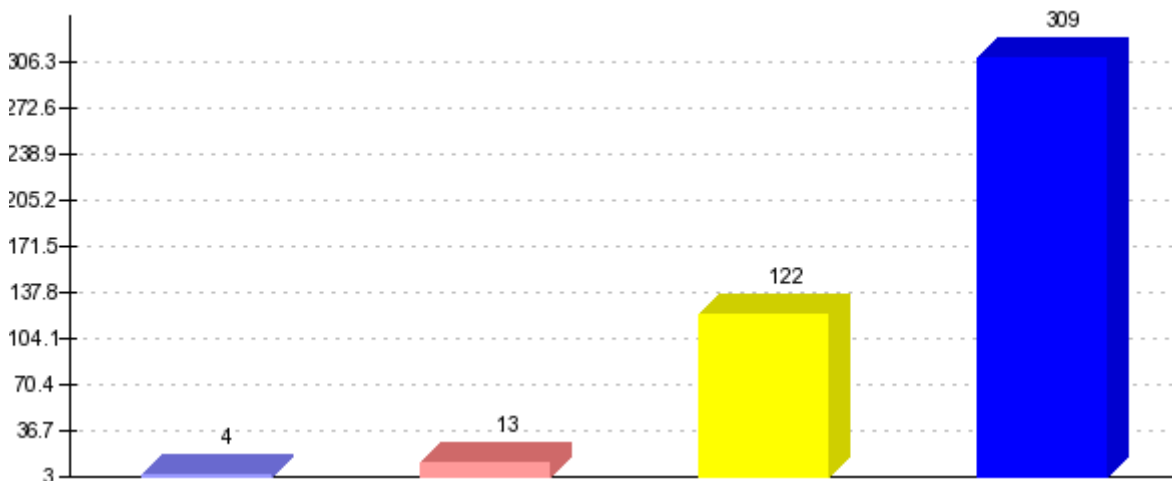
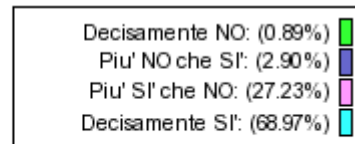
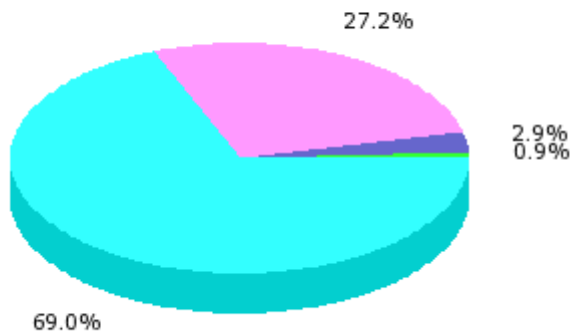
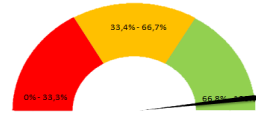


Domande questionario valutazione

Il docente è reperibile per chiarimenti e spiegazioni? [Is the professor available for further explanations if you need them?]

Somma giudizi: 448
Valore medio (*): 3.64
Valore medio (**): 0.76
Dev. Standard: 0.58

Soddisfazione: 96.21%

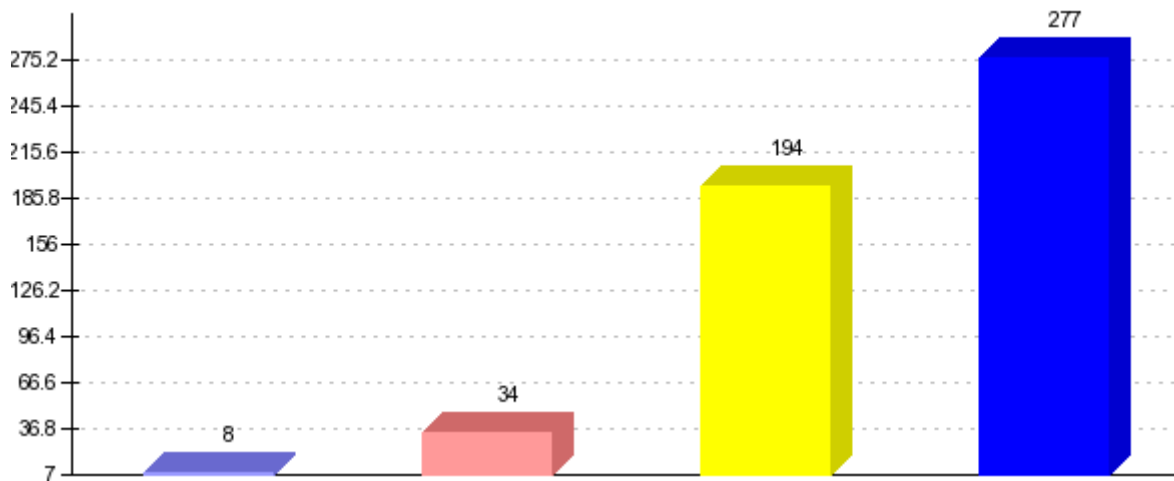
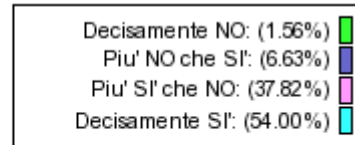
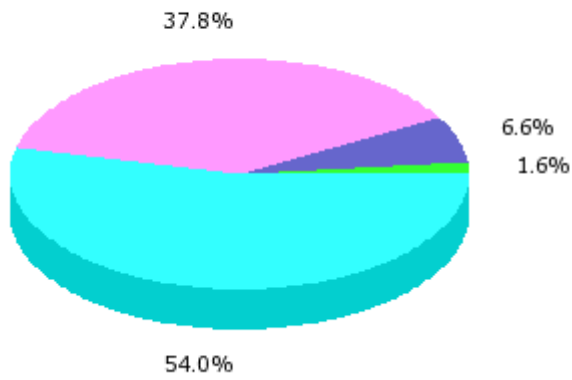
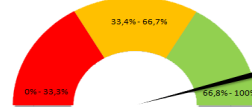


Domande questionario valutazione

E' interessato/a agli argomenti trattati nell'insegnamento? [Are you interested in the contents of this course?]

Somma giudizi: 513
Valore medio (*): 3.44
Valore medio (**): 0.63
Dev. Standard: 0.69

Soddisfazione: 91.81%

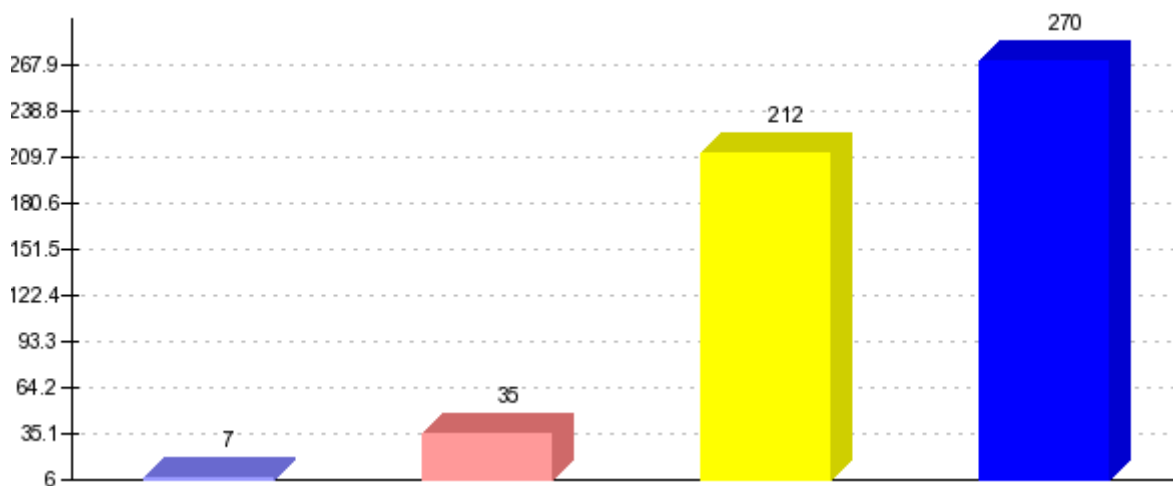
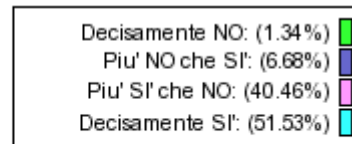
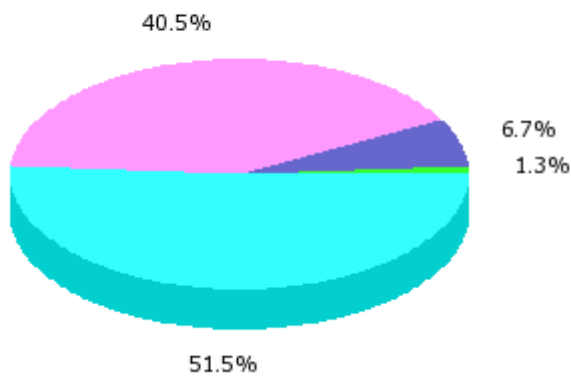
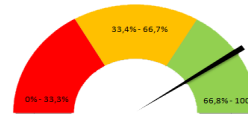


Domande aggiuntive di CdS

Gli obiettivi di tirocinio sono stati esplicitati dal tutor in modo chiaro e comprensibile? [Were the internship goals clearly defined?]

Somma giudizi: 44
Valore medio (*): 3.16
Valore medio (**): 0.44
Dev. Standard: 0.77

Soddisfazione: 81.82%

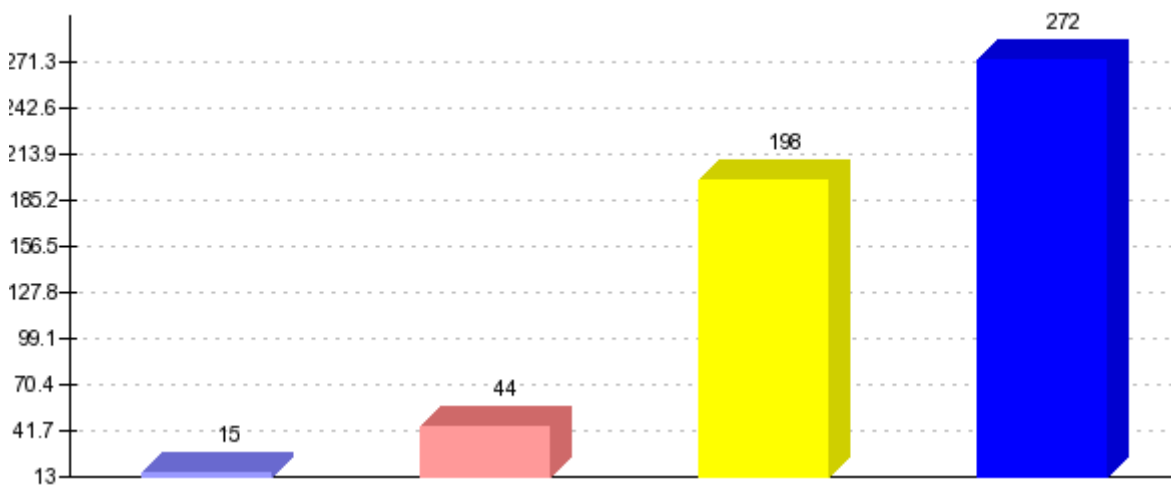
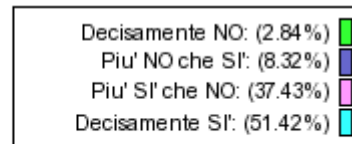
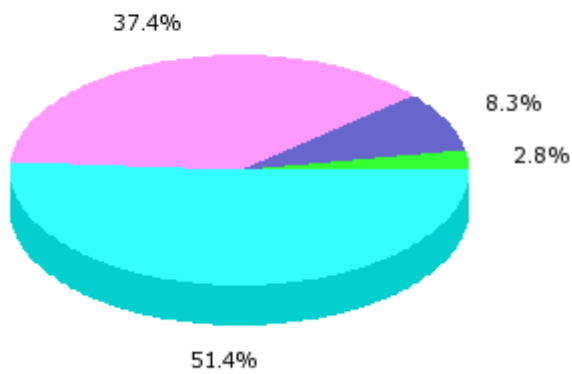
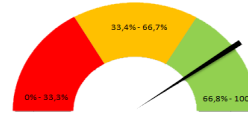


Domande aggiuntive di CdS

Durante lo svolgimento delle attività di tirocinio ti sei sentito coinvolto e valorizzato dal tutor? [Were you involved and appreciated by your tutor?]

Somma giudizi: 42
 Valore medio (*): 3.14
 Valore medio (**): 0.43
 Dev. Standard: 0.83

Soddisfazione: 80.95%

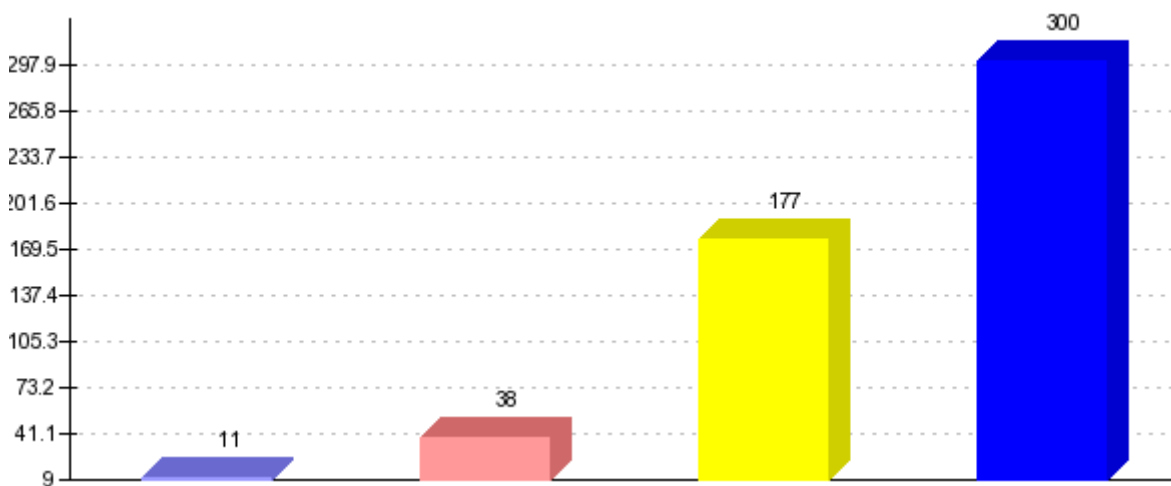
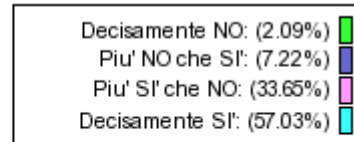
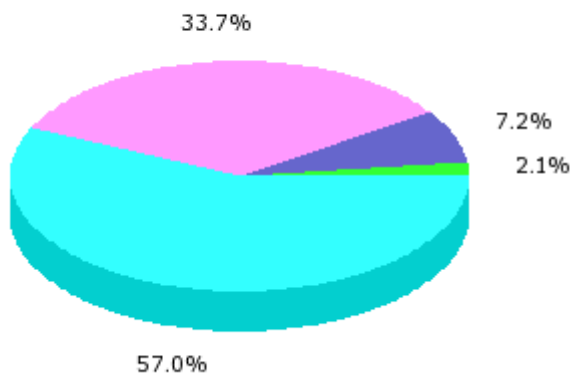
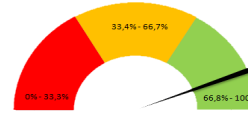


Domande aggiuntive di CdS

I tutor hanno garantito la loro disponibilità professionale? [Were the tutors available if you needed anything?]

Somma giudizi: 42
 Valore medio (*): 3.24
 Valore medio (**): 0.49
 Dev. Standard: 0.78

Soddisfazione: 88.10%

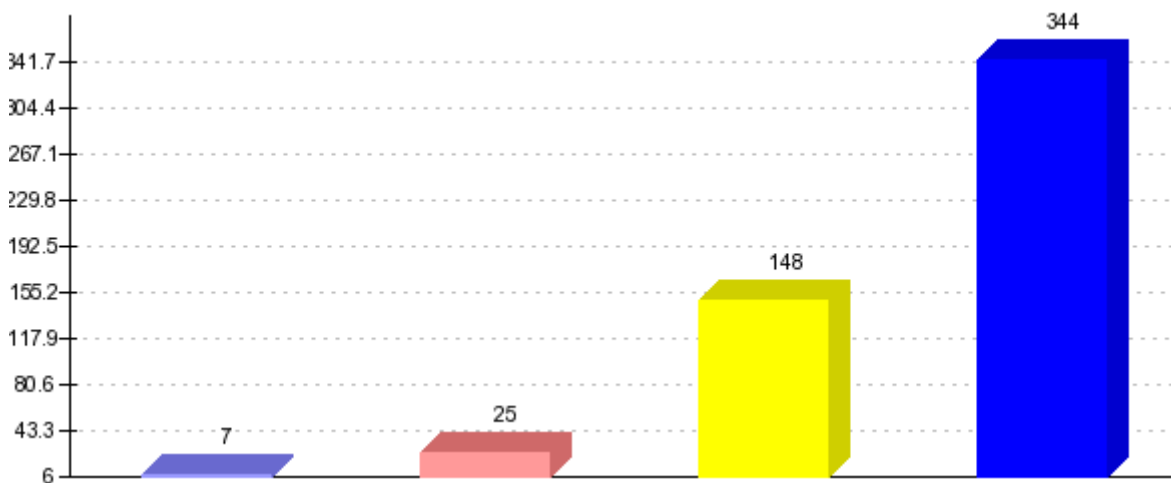
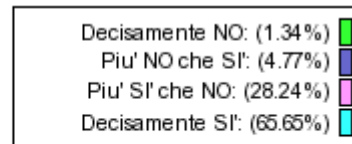
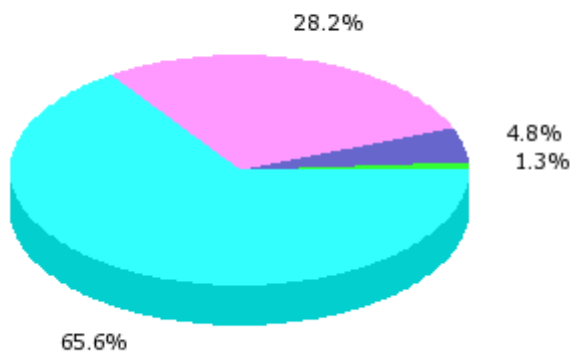
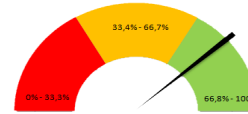


Domande aggiuntive di CdS

Secondo le tue aspettative, la valutazione delle attivit  di tirocinio   stata adeguata? [According to your expectations, were the internship activities properly assessed?]

Somma giudizi: 40
 Valore medio (*): 3.00
 Valore medio (**): 0.33
 Dev. Standard: 0.92

Soddisfazione: 77.50%



Domande aggiuntive di CdS

Il coordinatore ha garantito una organizzazione delle attività di tirocinio adeguate anche alle esigenze dello studente? [Did the coordinator plan the internship activities consistently with the student's needs?]

Somma giudizi: 40
 Valore medio (*): 2.98
 Valore medio (**): 0.32
 Dev. Standard: 1.08

Soddisfazione: 70.00%

